

Common Land Unit PLSS

- Cropland
- Tract Boundary

Wetland Determination Identifiers

- Restricted Use
- ▼ Limited Restrictions
- Exempt from Conservation
- Compliance Provisions

Unless Otherwise Noted:
 All crops are for grain
 All crops are non-irrigated
 Shares are 100% to Operator

2021 Program Year

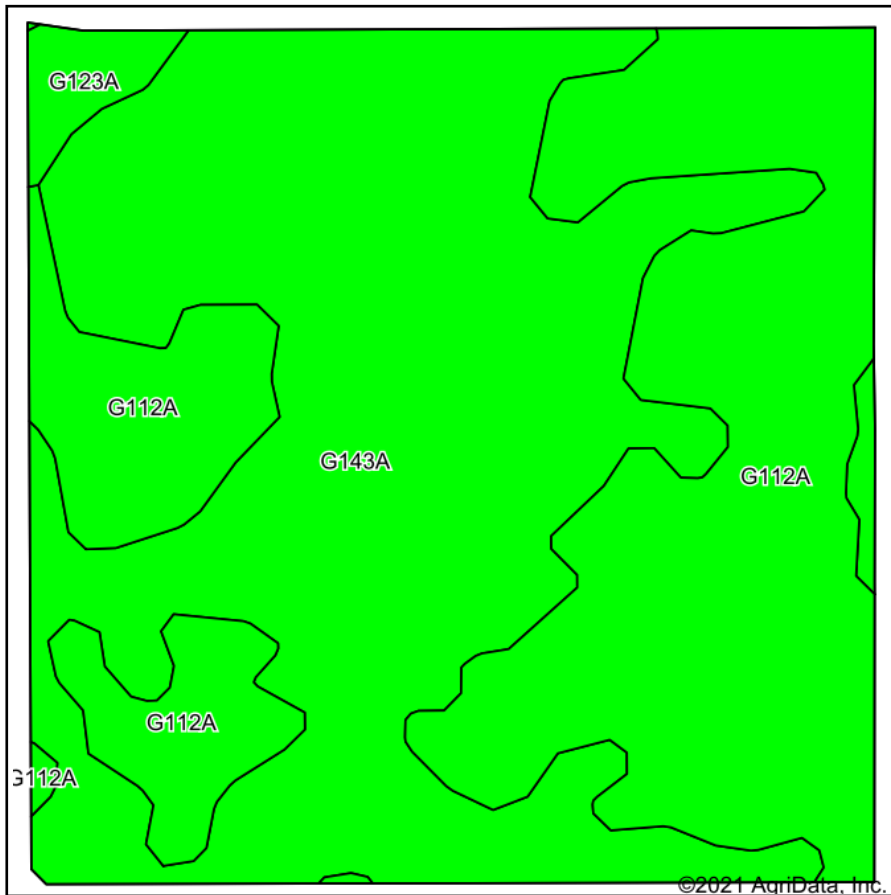
Map Created December 08, 2020

S24 T132N R63W

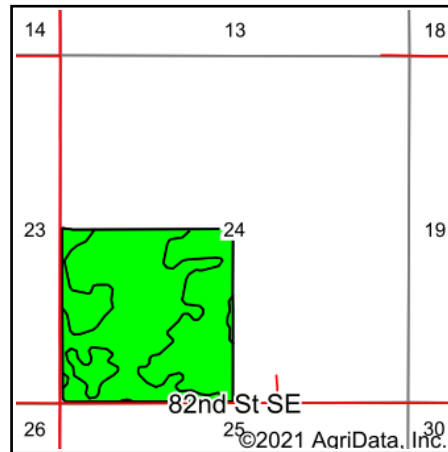


United States Department of Agriculture (USDA) Farm Service Agency (FSA) maps are for FSA Program administration only. This map does not represent a legal survey or reflect actual ownership; rather it depicts the information provided directly from the producer and/or National Agricultural Imagery Program (NAIP) imagery. The producer accepts the data 'as is' and assumes all risks associated with its use. USDA-FSA assumes no responsibility for actual or consequential damage incurred as a result of any user's reliance on this data outside FSA Programs. Wetland identifiers do not represent the size, shape, or specific determination of the area. Refer to your original determination (CPA-026 and attached maps) for exact boundaries and determinations or contact USDA Natural Resources Conservation Service (NRCS). The imagery displayed on this map was collected in calendar year 2020.

Soils Map



Soils data provided by USDA and NRCS.



State: **North Dakota**
 County: **Dickey**
 Location: **24-132N-63W**
 Township: **Valley**
 Acres: **155.63**
 Date: **11/11/2021**



Area Symbol: ND021, Soil Area Version: 24

Code	Soil Description	Acres	Percent of field	Non-Irr Class Legend	Non-Irr Class *c	Productivity Index	*n NCCPI Overall	*n NCCPI Soybeans
G143A	Barnes-Svea loams, 0 to 3 percent slopes	86.07	55.3%		IIc	85	59	58
G112A	Hamerly-Tonka-Parnell complex, 0 to 3 percent slopes	66.74	42.9%		IIw	58	43	38
G123A	Svea-Cavour loams, 0 to 3 percent slopes	2.82	1.8%		IIc	73	50	50
Weighted Average					2.00	73.2	*n 52	*n 49.3

*n: The aggregation method is "Weighted Average using all components"

*c: Using Capabilities Class Dominant Condition Aggregation Method

Soils data provided by USDA and NRCS.