



Common Land Unit Tract Boundary
 Non-Cropland PLSS
 Cropland

Wetland Determination Identifiers

- Restricted Use
- Limited Restrictions
- Exempt from Conservation Compliance Provisions

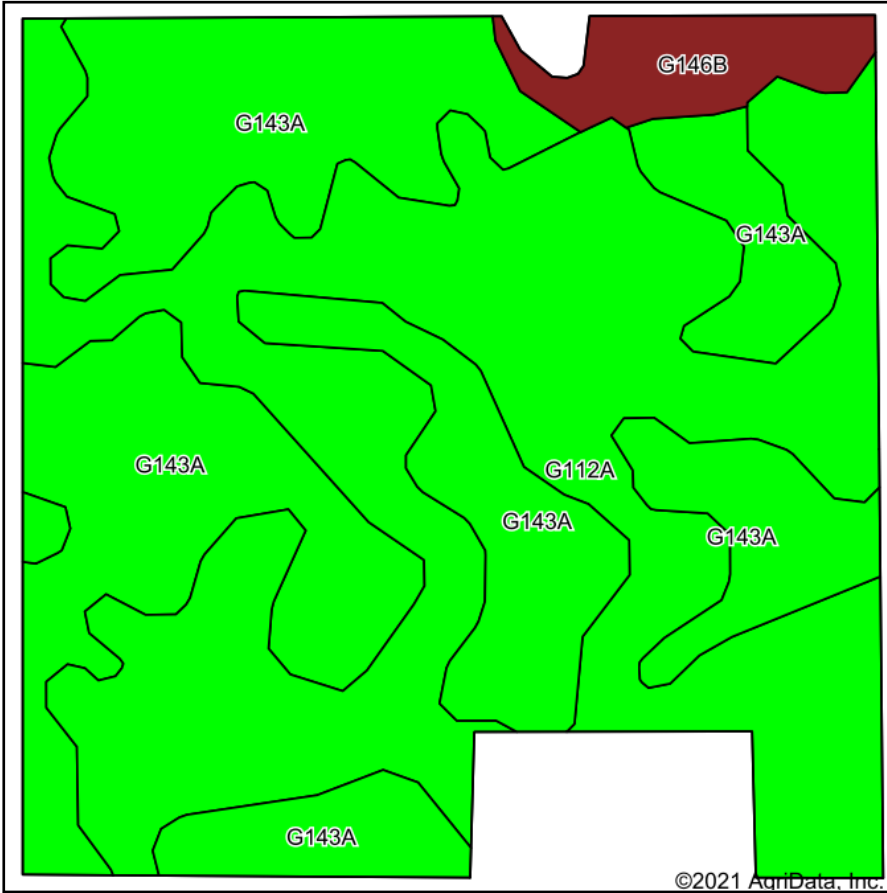
Unless Otherwise Noted:
 All crops are for grain
 All crops are non-irrigated
 Shares are 100% to Operator

2021 Program Year
 Map Created December 08, 2020
S36 T132N R63W

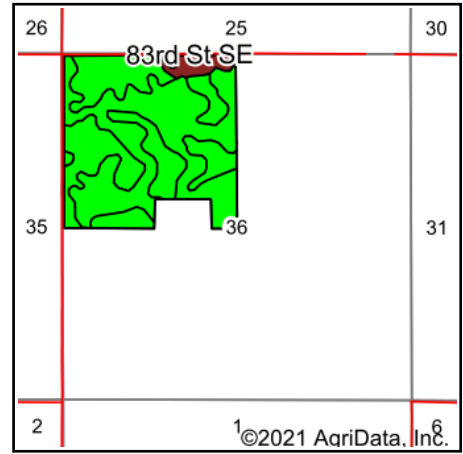


United States Department of Agriculture (USDA) Farm Service Agency (FSA) maps are for FSA Program administration only. This map does not represent a legal survey or reflect actual ownership; rather it depicts the information provided directly from the producer and/or National Agricultural Imagery Program (NAIP) imagery. The producer accepts the data 'as is' and assumes all risks associated with its use. USDA-FSA assumes no responsibility for actual or consequential damage incurred as a result of any user's reliance on this data outside FSA Programs. Wetland identifiers do not represent the size, shape, or specific determination of the area. Refer to your original determination (CPA-026 and attached maps) for exact boundaries and determinations or contact USDA Natural Resources Conservation Service (NRCS). The imagery displayed on this map was collected in calendar year 2020.

Soils Map



Soils data provided by USDA and NRCS.



State: **North Dakota**
 County: **Dickey**
 Location: **36-132N-63W**
 Township: **Valley**
 Acres: **147.89**
 Date: **11/11/2021**



Maps Provided By:



© AgriData, Inc. 2021

www.AgriDataInc.com



Area Symbol: ND021, Soil Area Version: 24

Code	Soil Description	Acres	Percent of field	Non-Irr Class Legend	Non-Irr Class *c	Productivity Index	*n NCCPI Overall	*n NCCPI Soybeans
G112A	Hamerly-Tonka-Parnell complex, 0 to 3 percent slopes	74.20	50.2%		Ilw	58	43	38
G143A	Barnes-Svea loams, 0 to 3 percent slopes	67.44	45.6%		Ilc	85	59	58
G146B	Barnes-Buse-Parnell complex, 0 to 6 percent slopes	6.25	4.2%		Ille	63	52	49
Weighted Average					2.04	70.5	*n 50.7	*n 47.6

*n: The aggregation method is "Weighted Average using all components"

*c: Using Capabilities Class Dominant Condition Aggregation Method

Soils data provided by USDA and NRCS.