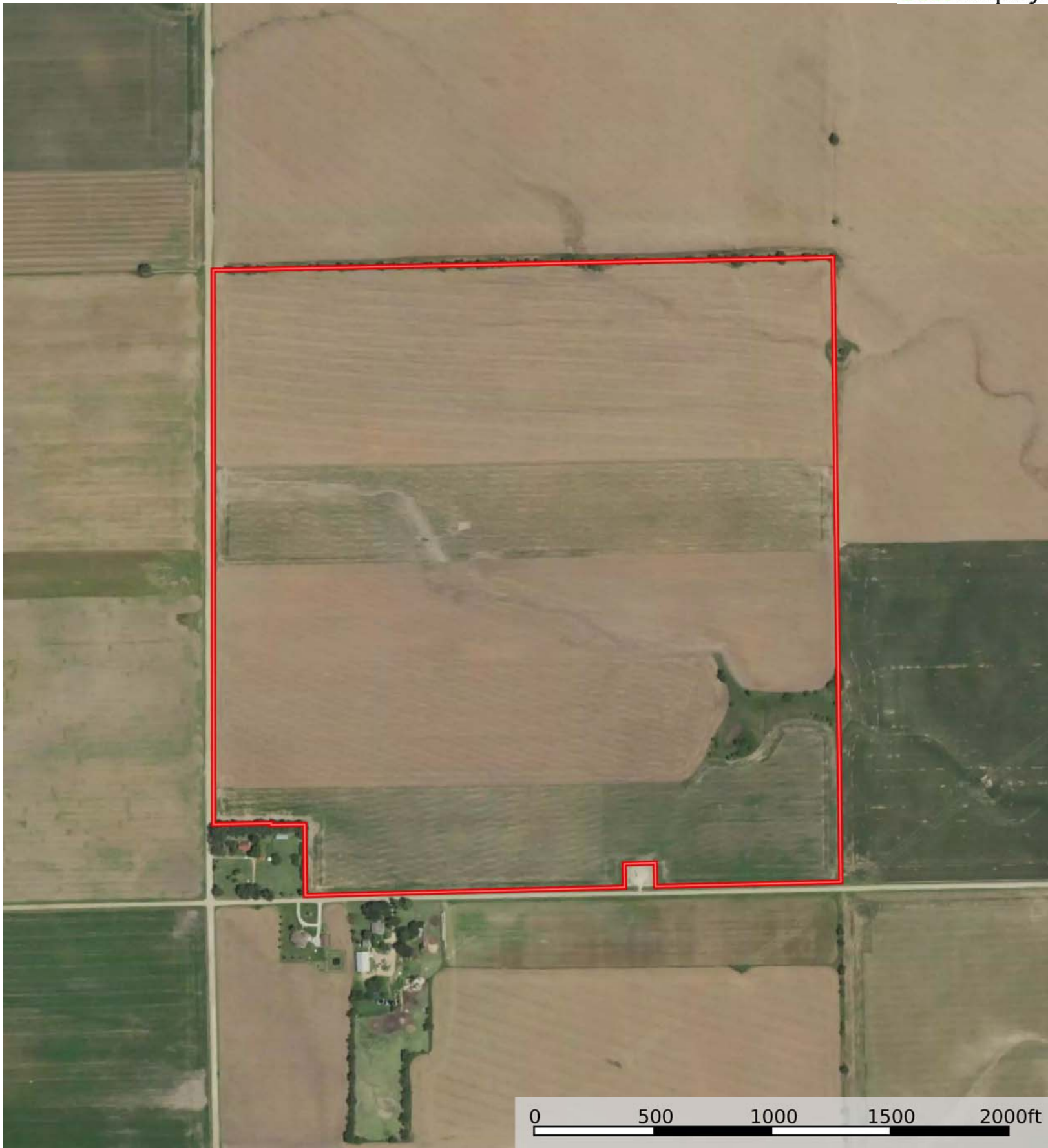



FNC 9913

Sedgwick County, Kansas, 156.557 AC +/-



 Boundary



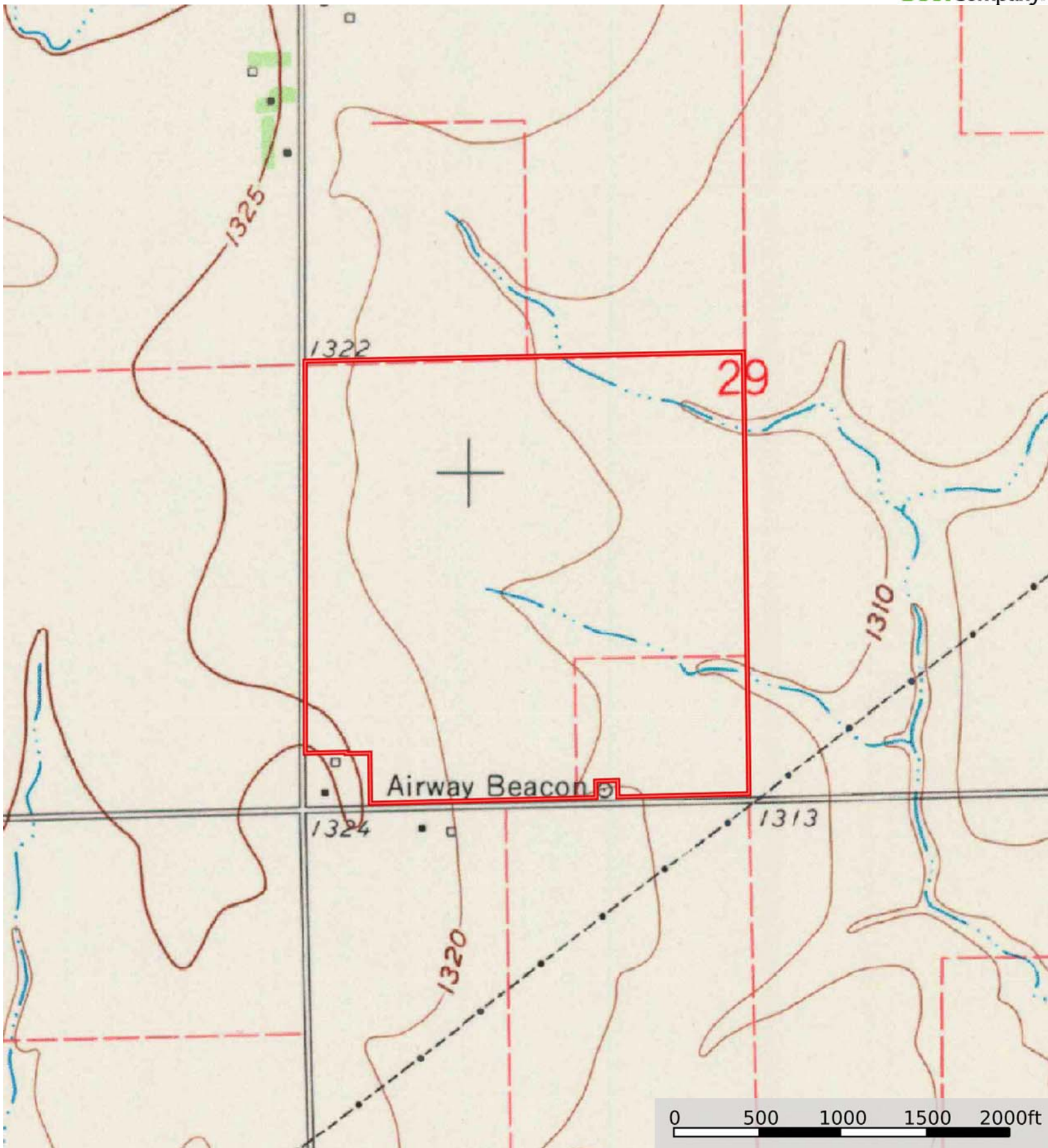
 Boundary


Boundary 156.66 ac

SOIL CODE	SOIL DESCRIPTION	ACRES	%	NCCPI	CAP
6322	Blanket silt loam, 0 to 1 percent slopes	130.4	83.24	64	2c
6323	Blanket silt loam, 1 to 3 percent slopes	14.38	9.18	63	2e
5967	Tabler silty clay loam, 0 to 1 percent slopes	11.88	7.58	56	2s
TOTALS		156.65(*)	100%	63.31	2.0

(*) Total acres may differ in the second decimal compared to the sum of each acreage soil. This is due to a round error because we only show the acres of each soil with two decimal.





 Boundary

