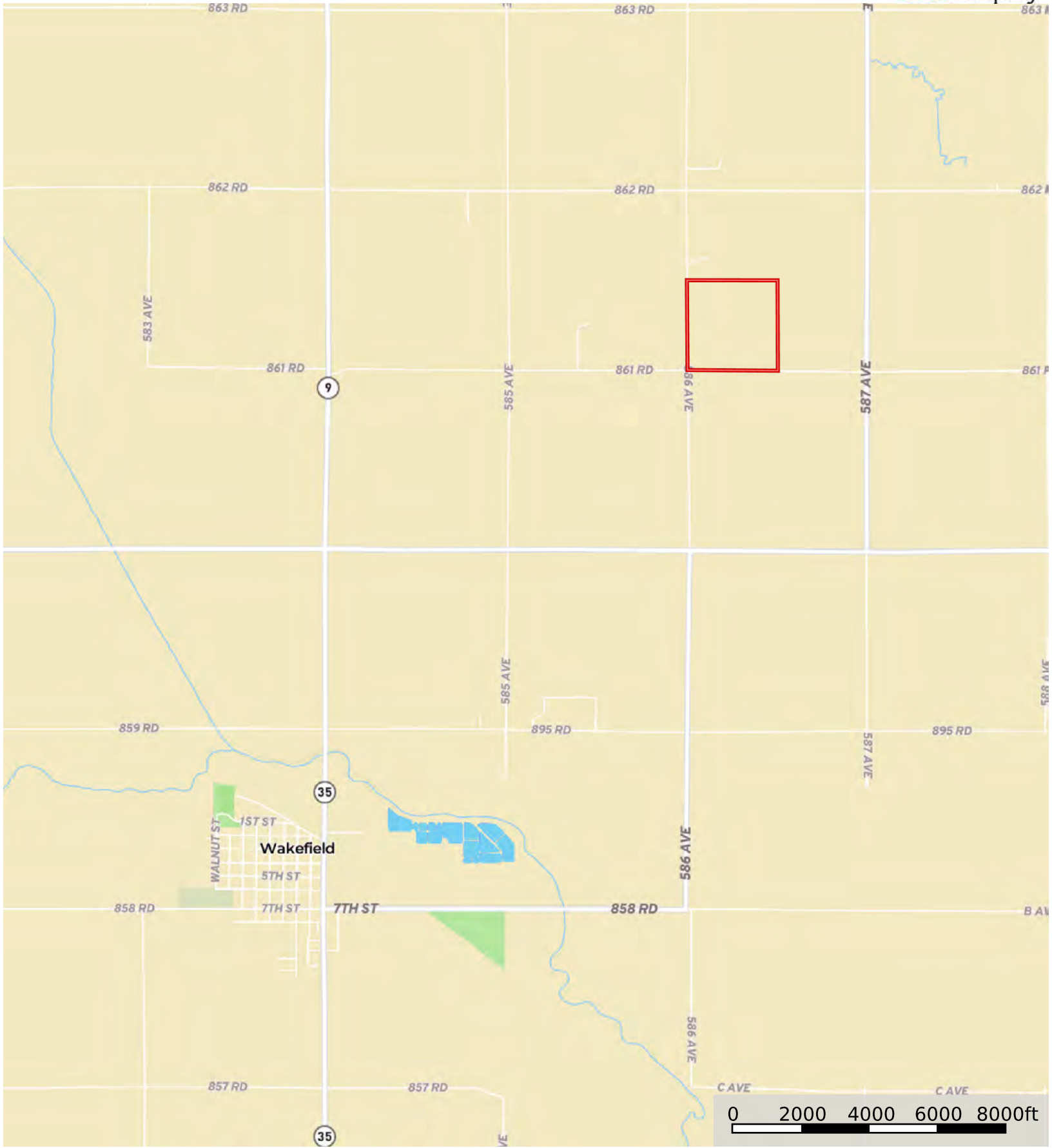


# Hitz Farm Land

Dixon County, Nebraska, 160.02 AC +/-



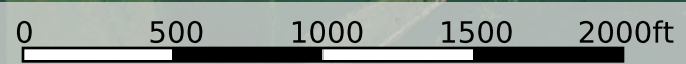
 Boundary



0 500 1000 1500 2000ft

 Boundary





 Boundary

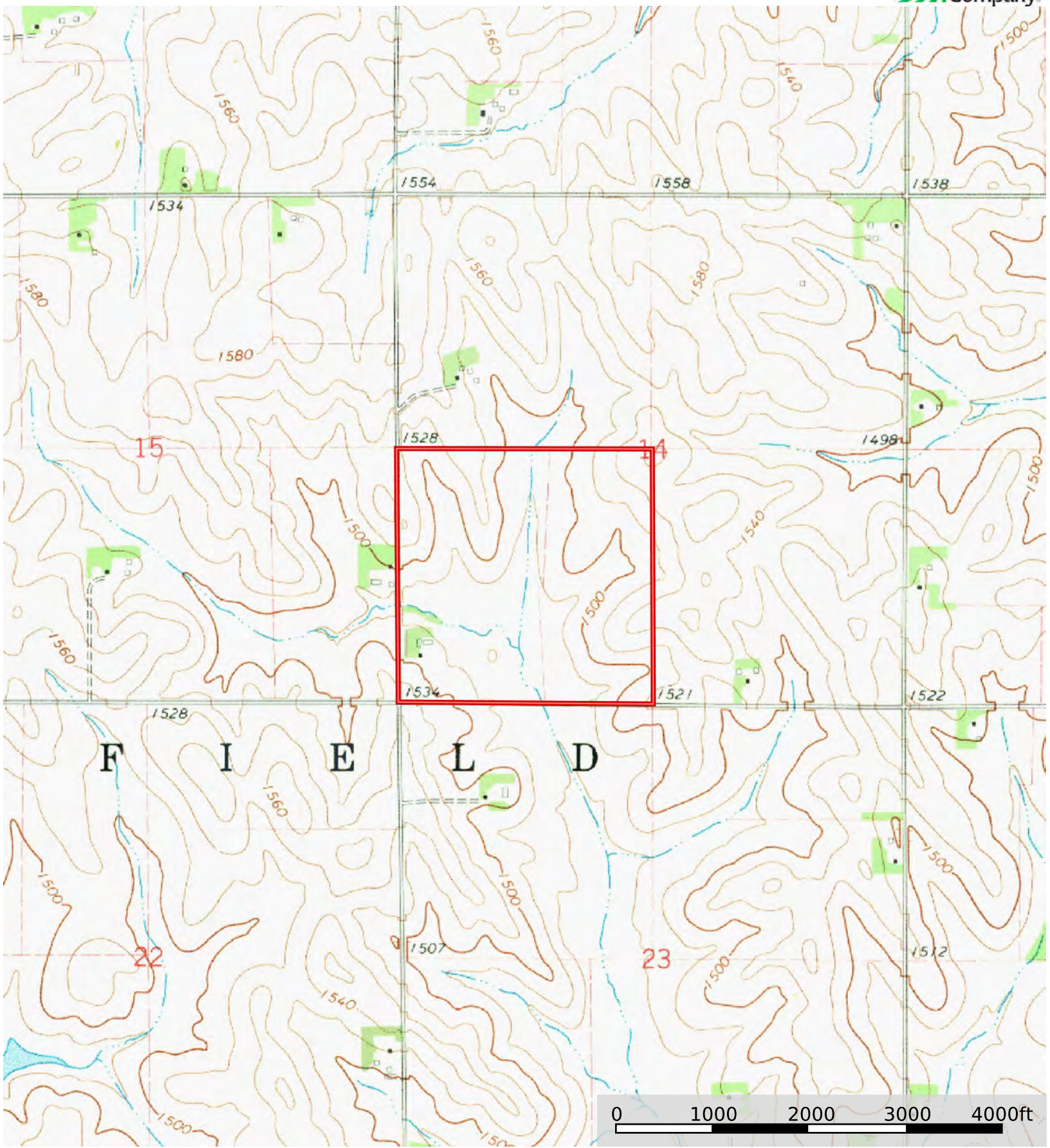
|  Boundary 160.0 ac

SOIL CODE	SOIL DESCRIPTION	ACRES	%	CPI	NCCPI	CAP
6813	Moody silty clay loam, 6 to 11 percent slopes	49.36	30.85	0	75	3e
6687	Crofton silt loam, 6 to 11 percent slopes, eroded	28.73	17.95	0	69	4e
3518	Lamo silty clay loam, 0 to 2 percent slopes, occasionally flooded	26.12	16.32	0	80	2w
6400	Calco silt loam, overwash, occasionally flooded	23.56	14.72	0	80	2w
6603	Alcester silty clay loam, 2 to 6 percent slopes	11.98	7.49	91	76	2e
6750	Nora silt loam, 11 to 17 percent slopes, eroded	7.38	4.61	48	64	4e
6814	Moody silty clay loam, 6 to 11 percent slopes, eroded	6.13	3.83	0	64	3e
6811	Moody silty clay loam, 2 to 6 percent slopes	5.73	3.58	67	76	2e
6685	Crofton silt loam, 2 to 6 percent slopes, eroded	1.01	0.63	0	71	3e
TOTALS		160.0 2(*)	100%	11.43	74.62	2.8

(\*) Total acres may differ in the second decimal compared to the sum of each acreage soil. This is due to a round error because we only show the acres of each soil with two decimal.







 Boundary